

Total detailed catches by area for the major species

Total des captures par zone pour les principales espèces

Captura total por zonas para las principales especies

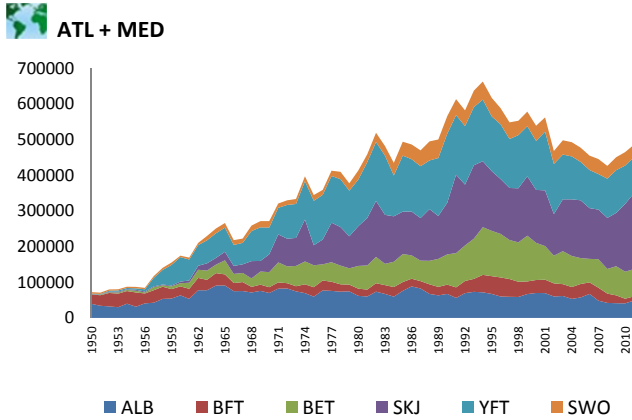


Figure 8 Cumulative catch of temperate tunas (ALB, BFT), tropical tunas (BET, SKJ, YFT) and SWO, in ATL+MED
 Figure 8 Prise cumulative de thonidés tempérés (ALB, BFT), thonidés tropicaux (BET, SKJ, YFT) et SWO, dans ATL+MED
 Figura 8 Total acumulado de capturas de tónidos templados (ALB, BFT), tónidos tropicales (BET, SKJ, YFT) y SWO, en ATL+MED

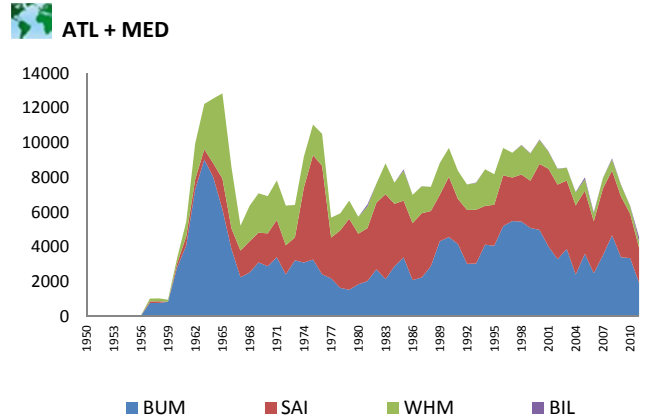


Figure 9 Cumulative catch of billfishes (BUM, SAI, WHM, BIL) in ATL+MED
 Figure 9 Prise cumulative d'istiophoridés (BUM, SAI, WHM, BIL) dans ATL+MED
 Figura 9 Total acumulado de capturas de marlines (BUM, SAI, WHM, BIL) en ATL+MED

Total longline catches for the major species

Total des captures palangrières pour les principales espèces

Captura total de los palangreros para las principales especies

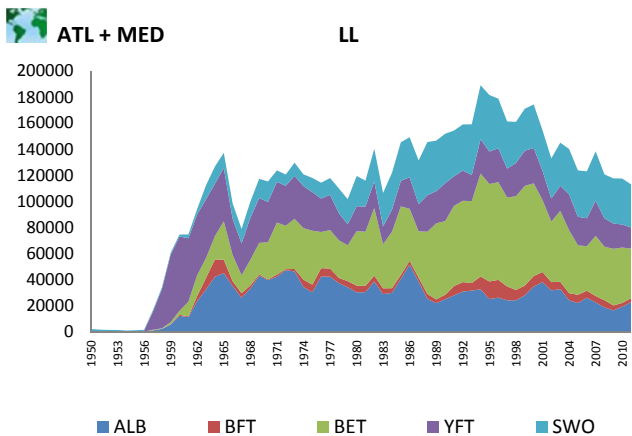


Figure 10 Cumulative longline catch of ALB, BFT, BET, YFT and SWO (ATL + MED)
 Figure 10 Prise cumulative palangrière de ALB, BFT, BET, YFT et SWO (ATL + MED)
 Figura 10 Total acumulado de capturas con palangre de ALB, BFT, BET, YFT y SWO (ATL + MED)

Total baitboat catches for the major species

Total des captures des canneurs pour les principales espèces

Captura total de los barcos de cebo vivo para las principales especies

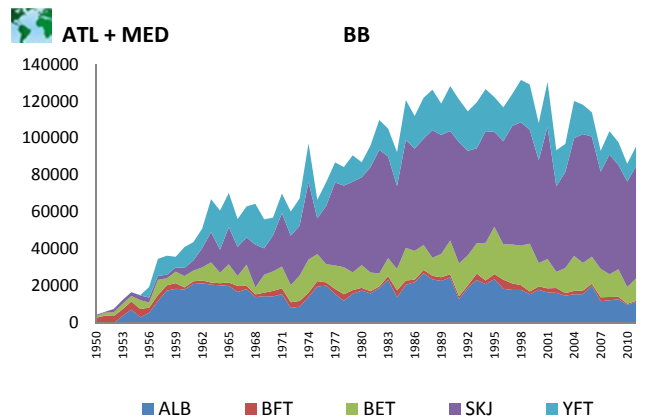


Figure 11 Cumulative baitboat catches of ALB, BFT, BET, SKJ and YFT (ATL + MED)
 Figure 11 Prise cumulative des canneurs de ALB, BFT, BET, SKJ et YFT (ATL + MED)
 Figura 11 Total acumulado de capturas con cebo vivo de ALB, BFT, BET, SKJ y YFT (ATL + MED)