

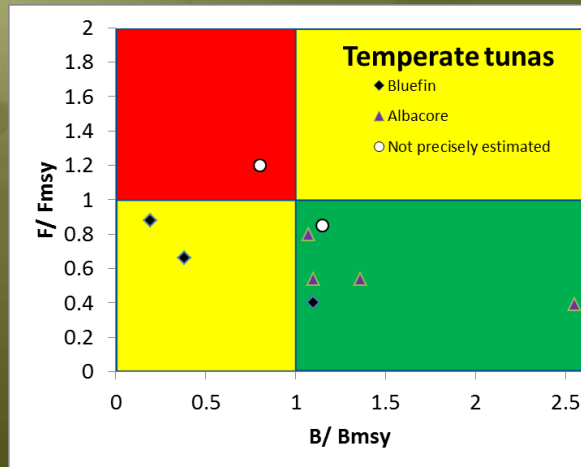
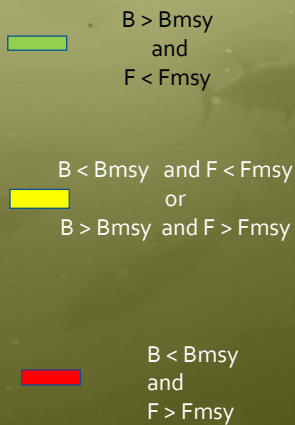
2016

ICCATSCRS Report

Panel 3 Temperate tunas South



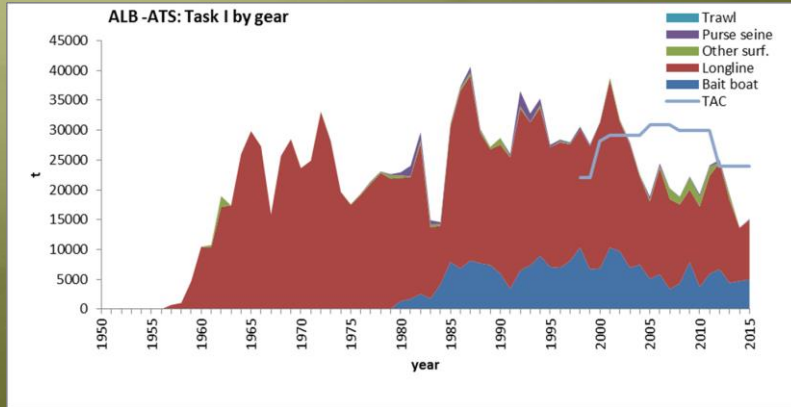
Stock status for major temperate tuna stocks



Data from Tuna RFMOs compiled by ISSF and updated for Atlantic by SCRS

ISSF, 2016. ISSF Tuna Stock Status Update, 2016: Status of the world fisheries for tuna. ISSF Technical Report 2016-05A. International Seafood Sustainability Foundation, Washington, D.C., USA.

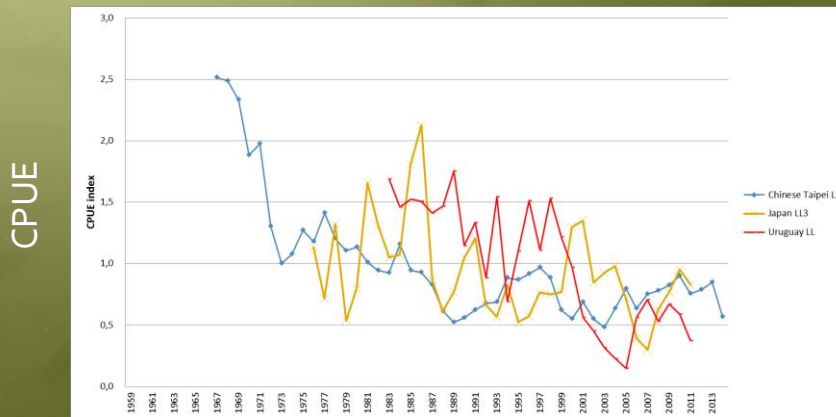
• ALB South: Catches 2016 Assessment (Madeira)



- Most of the catch came from LL (Chinese Taipei) and BB (South Africa & Namibia)
- Catch below TAC in recent years

3

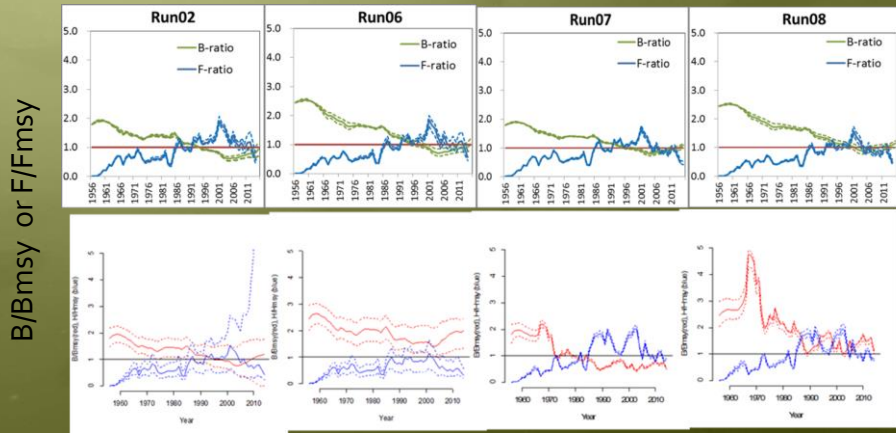
• ALB South: relative abundance based on CPUE



- General decrease followed by stabilization and some increase

4

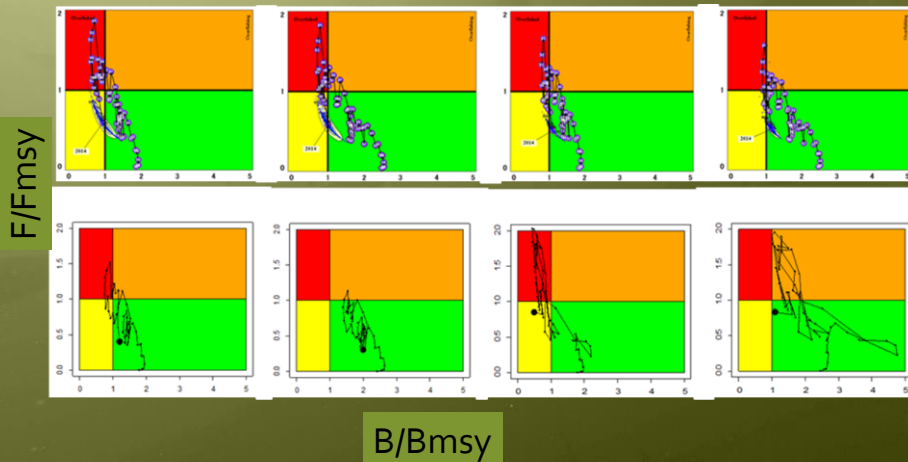
• ALB South: stock status ASPIC and BSP



- Consistent trends
- Larger c.i. for BSP (equal weights)

5

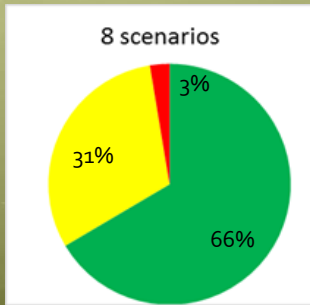
• ALB South: stock status



- Most scenarios predict green status, with higher B/Bmsy and lower F/Fmsy compared to last assessment.

6

• ALB South: Stock Status

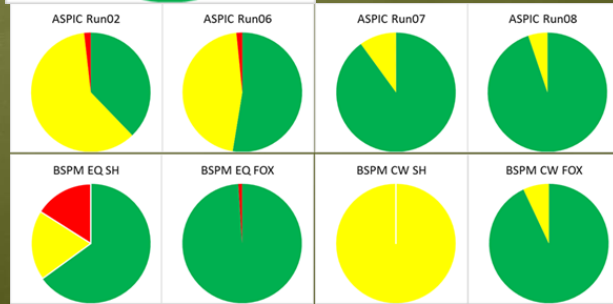


Improved stock status:

B/Bmsy= 1.10 (0.51-1.80)

F/Fmsy=0.54 (0.31-0.87)

MSY=25,901 (15,270-31,768) t



7

• ALB South: Outlook

Catch (t)	2017	2018	2019	2020	2021	2022	2023	2024	2025	2026	2027	2028	2029
12,000	74%	80%	94%	95%	95%	96%	96%	96%	96%	96%	96%	96%	96%
14,000	74%	78%	93%	94%	95%	95%	95%	96%	96%	96%	96%	96%	96%
16,000	73%	77%	90%	93%	94%	94%	95%	95%	95%	95%	95%	95%	95%
18,000	68%	72%	83%	89%	91%	92%	92%	93%	93%	93%	93%	94%	94%
20,000	63%	65%	71%	81%	83%	84%	84%	85%	86%	86%	86%	87%	87%
22,000	62%	63%	65%	73%	78%	79%	79%	80%	80%	80%	80%	80%	80%
24,000	61%	60%	60%	63%	69%	72%	72%	72%	71%	71%	70%	70%	69%
26,000	55%	54%	53%	52%	52%	55%	56%	57%	56%	55%	54%	53%	52%
28,000	48%	45%	42%	40%	37%	35%	35%	35%	35%	35%	35%	35%	35%
30,000	39%	35%	33%	30%	28%	26%	24%	23%	21%	20%	19%	18%	18%
32,000	32%	29%	26%	24%	22%	19%	17%	16%	14%	13%	12%	11%	11%
34,000	28%	25%	22%	19%	15%	13%	11%	9%	8%	7%	7%	6%	6%

TAC

- Maximum catch that enables green zone in 2020 with probability >60%:

Model	Run	Catch
ASPIC	Run2	26,000
	Run6	24,000
	Run7	26,000
	Run8	26,000
BSPM	EQ SH	30,000
	EQ FOX	34,000
	CW SH	22,000
	CW FOX	18,000
Average		25,750
Median		26,000

8

- ALB South: Management recommendations

- Projections at a level consistent with the 2016 TAC (24,000 t) showed that probabilities of being in the green quadrant of the Kobe plot across all scenarios would increase to 63% by 2020.
-
- Further reductions in TAC would increase the probability of being in the green zone in those timeframes.
- On the other hand, catches above 26,000 t will not permit maintaining the stock in the green area with at least 60% probability by 2020.

9

- ALB: Recommendations on Research and Statistics

- Albacore Research Program (1.2 M Euros over 4 years)
- Increase participation by scientists of countries with important albacore fisheries
- CPUEs:
 - Try new indices: French MWT, Spain LL, Portugal LL, Korea LL
 - Recover Japanese LL historical period
 - Joint analyses of LL and SURF fisheries
- T2 data: document changes for France MWT and submit Chinese Taipei LL data.
- CPCs with major Mediterranean fleets: revise and submit T1 and T2 data.

10

ALB Research Program (1.2 M€)

Research aim	Year 1	Year 2	Year 3	Year 4
Biology and Ecology				
Reproductive biology (spawning area, season, maturity, fecundity)	x	x	x	
Environmental influence on NE Atlantic surface CPUE	x	x		
Distribution throughout the Atlantic (e-tags)	x	x	x	x
Population structure: contingents	x	x	x	x
Monitoring stock status				
Joint Atlantic longline CPUE	x	x		
Joint NE Atlantic surface CPUE	x	x		
Feasibility of fisheries independent survey		x	x	x
Management Strategy Evaluation				
Observation error: CPUE error structures and age classes	x			
Management Procedure: delay difference models	x			
Operating models: regime shifts	x			
Management Procedure: HCRs with bounded TACs	x	x		
Observation error: changes in catchability over time		x	x	
Implementation error		x	x	
Operating models: changes in selectivity		x	x	
Operating models: autocorrelated recruitment		x	x	
Operating models: broader scenarios using MFCL or SS			x	x
Communication: performance indicators and plotting	x	x	x	x

11

Executive Summary Table

	South Atlantic
Maximum Sustainable Yield	25,901 t (15,270-31,768) ²
Current (2016) TAC	24,000 t
Current (2015) Yield	15,144 t
Yield in last year of assessment (2014)	13,677 t
Yield in last year of assessment (2010)	
B _{MSY}	120,465 t (71,312-208,438) ²
F _{MSY}	0.202 (0.119-0.373) ²
B ₂₀₁₅ /B _{MSY}	1.10 (0.51-1.80) ²
B ₂₀₁₅ /B _{Lim} ³	
F ₂₀₁₄ /F _{MSY}	0.54 (0.31-0.87) ²
F ₂₀₁₁ /F _{MSY}	
Stock Status	Overfished: NO
	Overfishing: NO
Management measures in effect:	[Rec. 13-06]; TAC of 24,000 t for 2014-2016

12

Nov 2016

ICCAT Commission Vila Moura