



ALB Exceptional Circumstances

Haritz Arrizabalaga (ALB SG coordinator)

On behalf of the SCRS Chair

2021 Panel 2 intersessional meeting

Online 4 March 2021

ICCAT CICTA CICAA



Objective

- The adopted HCR was robust to a set of conditions simulated in the MSE process.
- So, is there evidence of departure from those conditions, that might prevent the application of the HCR?



Indicators for exceptional circumstances

To check that:

- Data (catch, CPUE, biology) is available and “within bounds” used in the simulations
- B/B_{MSY} and F/F_{MSY} remain “within bounds” of simulated stock realities, and simulated stock assessments



Indicators for exceptional circumstances

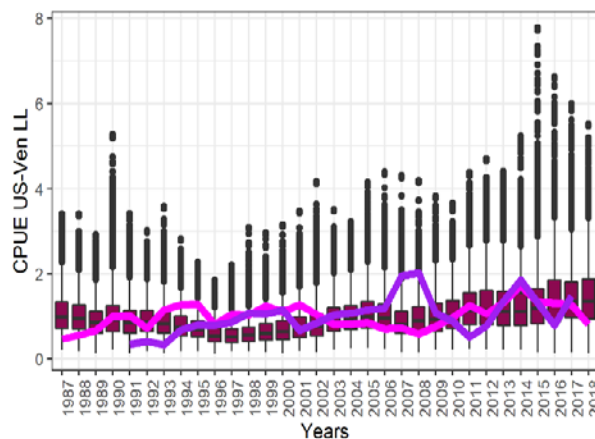
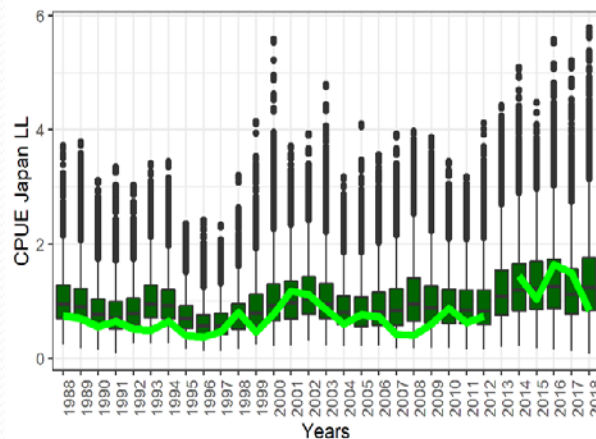
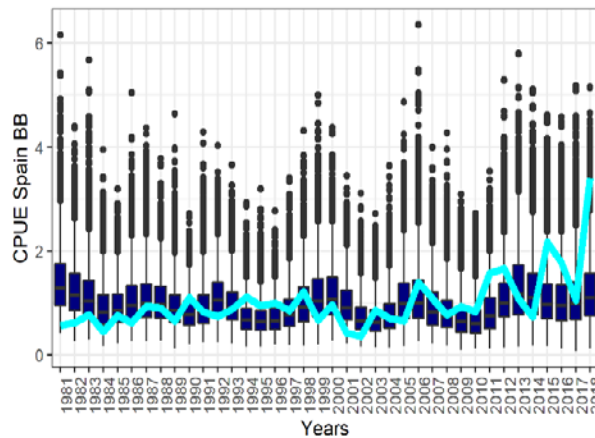
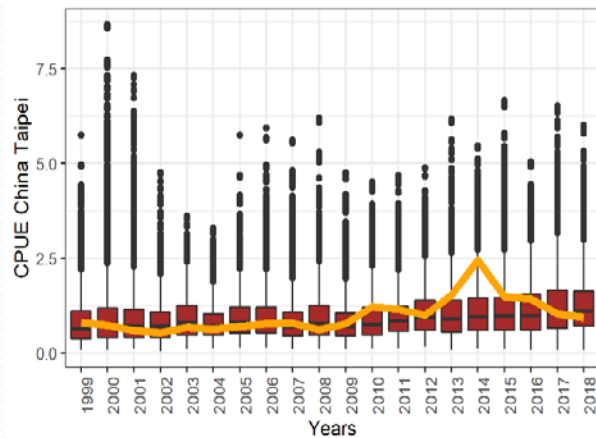
Different periodicities depending on:

- A regular year
- A HCR iteration year (every 3 years)
- A benchmark assessment year (every 6-7 years)



Indicators for exceptional circumstances:

2020 examples



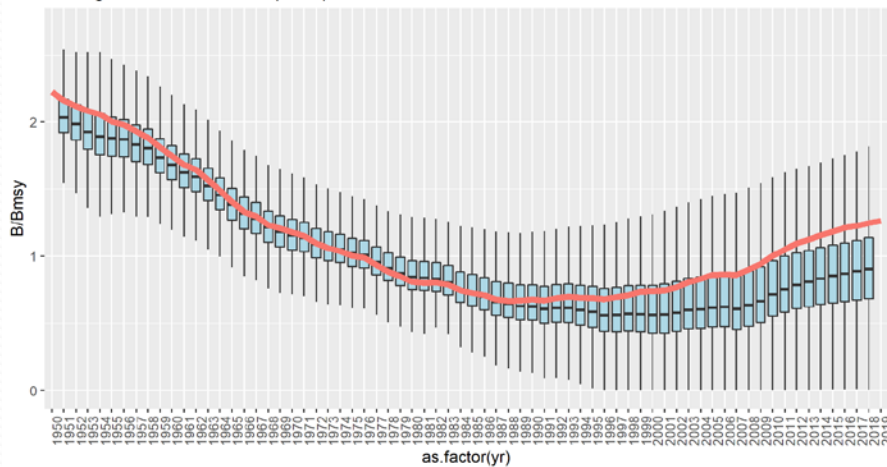
✓ within bounds



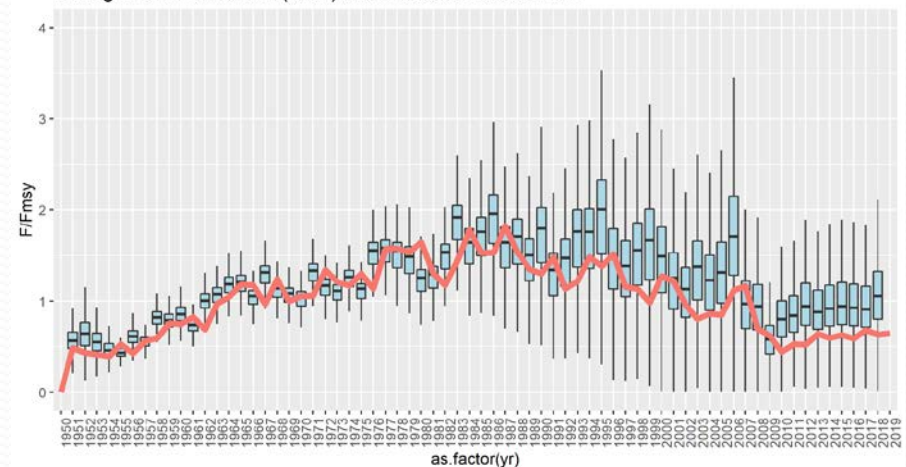
Indicators for exceptional circumstances:

2020 examples

Management Procedures (MSE) vs 2020 stock assessment



Management Procedures (MSE) vs 2020 stock assessment



✓ within bounds -> No exceptional Circumstances